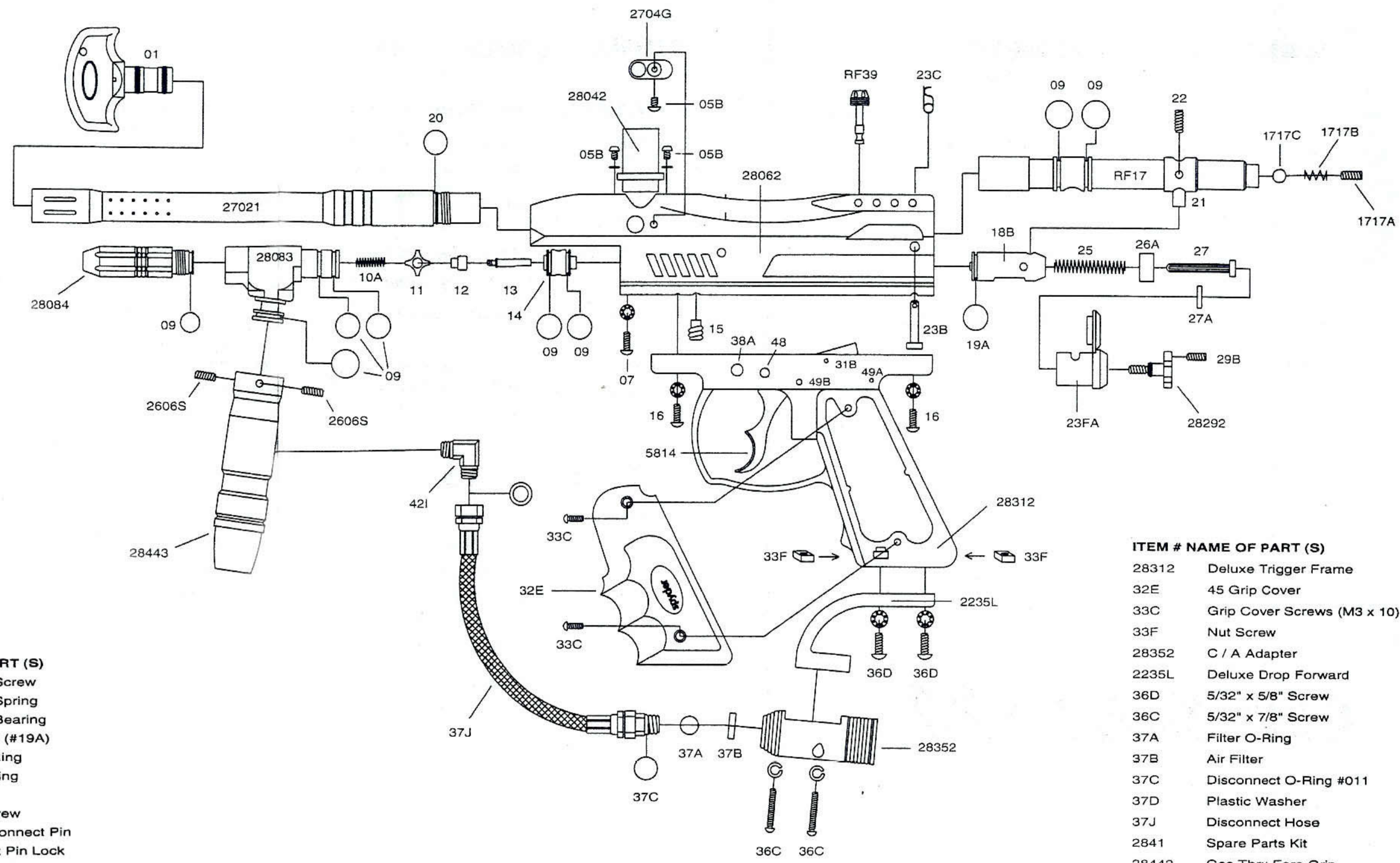


CO2/HP AIR TANK WARNING

⚠ WARNING

- VALVES MUST BE INSTALLED OR REMOVED ONLY BY QUALIFIED PERSONNEL.
- BOTTLE MUST BE RETESTED SEE CO2/HP TANK LABEL FOR RETEST DATE!
- Improper use, filling, storage or disposal of this cylinder may result in death, personal injury and property damage.
- This cylinder must be filled only by properly Trained personnel in accordance with CGA Pamphlets P.1 and G-6.3 available from the Compressed Gas Association WWW.CGANET.COM
- Do not over pressurize. Do not expose pressurized cylinder to temperatures in excess of 130 degrees F.
- Do not expose cylinder to corrosive materials and do not clean with caustic cleaners.
- Do not alter this cylinder in any way.
- Cylinders heated to a temperature of 250 degrees F or more must be condemned or requalified in accordance with test defined in CFR-49.
- Keep cylinder out of reach of children.
- The valve should NEVER be detached from the canister. Should this occur, please seek assistance from a trained airsmith immediately.
- This tank is intended for paintball use only.



SPYDER TL-R

ITEM # NAME OF PART (S)

01	Spyder Barrel Plug
27021	12" Barrel
2704G	Ball Stopper W / Detent Cover
05B	M4 x 6 Screw
28042	Direct Feed
28062	Receiver (Blue)
28083	Vertical Adapter
28084	Low Pressure Chamber
07	M5 x 14 Screw W / Washer
09	O-Ring #015 80D
10A	Valve Spring
11	Cup Seal Guide
12	Cup Seal
13	Valve Pin
14	Valve Body
15	Valve Body Screw
16	M5 x 12 Screw
RF17	Venturi Bolt

ITEM # NAME OF PART (S)

1717A	Retaining Screw
1717B	Retaining Spring
1717C	Retaining Bearing
18B	Striker Bolt (#19A)
19A	Striker O-Ring
20	Barrel O-Ring
21	Bolt Pin
22	M4 X 8 Screw
23B	Quick Disconnect Pin
23C	Disconnect Pin Lock
23FA	Striker Bolt Plug
25	Striker Spring
26A	Striker Buffer
27	Striker Spring Guide
27A	Flat Disc
29B	Lock Screw
28292	Thumb Adjuster W / Lock Screw
31B	Trigger Sear

ITEM # NAME OF PART (S)

28312	Deluxe Trigger Frame
32E	45 Grip Cover
33C	Grip Cover Screws (M3 x 10)
33F	Nut Screw
28352	C / A Adapter
2235L	Deluxe Drop Forward
36D	5/32" x 5/8" Screw
36C	5/32" x 7/8" Screw
37A	Filter O-Ring
37B	Air Filter
37C	Disconnect O-Ring #011
37D	Plastic Washer
37J	Disconnect Hose
2841	Spare Parts Kit
28443	Gas Thru Fore Grip
38A	Safety Button Set
RF39	Cocking Knob
42I	Male To Male Metric Adapter
48	Trigger Roll Pin
49B	Sear Roll Pin
49A	Secondary Sear Roll Pin
5814	Double Trigger